



MT. CARMEL STA. RITA HILLS



2012 & 2013 RELEASES

MAIL ROAD
MT. CARMEL
BLOCKS 2, 3, 5
PINOT NOIR
STA. RITA HILLS
VINTAGE 2012

NAME	VINTAGE	BLEND	VINE DENSITY vines/acre	YIELDS tons/acre	HARVEST Dates	BARREL REGIME	OTHER WINEMAKING	BOTTLING Date	RELEASE Date	VOLUME in 9L cases	Suggested Retail
Mt. Carmel Vineyard Blocks 2, 3, 5 PINOT NOIR	2012	40% 828	2,400	2.9	25-Sept	42% new French oak 58% neutral French oak	100% destemmed Average of 12-day ferments	Sept-13	Oct-14	240	\$65
		20% 115	906	1.4	15-Sept						
		20% 2A	906	2.4	20-Sept						
		20% Mt. Carmel 1	906	1.1	25-Sept						

MAIL ROAD
MT. CARMEL
PINOT NOIR
STA. RITA HILLS
VINTAGE 2012

NAME	VINTAGE	BLEND	VINE DENSITY vines/acre	YIELDS tons/acre	HARVEST Dates	BARREL REGIME	OTHER WINEMAKING	BOTTLING Date	RELEASE Date	VOLUME in 9L cases	Suggested Retail
Mt. Carmel Vineyard PINOT NOIR	2012	85% 828	2,400	2.8	3-Oct	1/3 new French oak 2/3 neutral French oak	6-day cold soak 10% whole cluster 14 days on skins	Mar-14	Oct-14	100	\$100
		15% Mt. Carmel 1	906	1.1	1-Oct						

MAIL ROAD
MT. CARMEL
BLOCKS 3, 5
PINOT NOIR
STA. RITA HILLS
VINTAGE 2013

NAME	VINTAGE	BLEND	VINE DENSITY vines/acre	YIELDS tons/acre	HARVEST Dates	BARREL REGIME	OTHER WINEMAKING	BOTTLING Date	RELEASE Date	VOLUME in 9L cases	Suggested Retail
Mt. Carmel Vineyard Blocks 3, 5 PINOT NOIR	2013	45% 828	2,400	3.2	24-Sept	48% new French oak 52% neutral French oak	5-day cold soak 5% whole cluster 13 days on skins	Sept-14	Oct-15	250	\$65
		45% 2A	906	2.7	6-Sept						
		5% 667	906	2.8	8-Sept						
		5% Mt. Carmel 1	906	1.2	15-Sept						

MAIL ROAD
MT. CARMEL
PINOT NOIR
STA. RITA HILLS
VINTAGE 2013

NAME	VINTAGE	BLEND	VINE DENSITY vines/acre	YIELDS tons/acre	HARVEST Dates	BARREL REGIME	OTHER WINEMAKING	BOTTLING Date	RELEASE Date	VOLUME in 9L cases	Suggested Retail
Mt. Carmel Vineyard PINOT NOIR	2013	60% 828	2400	3.3	24-Sept	1/3 new French oak 2/3 neutral French oak	7-day cold soak Native fermentation 10 days on skins	Mar-15	Oct-15	180	\$100
		20% Mt. Carmel 1	906	0.9	14-Sept						
		20% 667	906	2.6	14-Sept						

MAIL ROAD
MT. CARMEL
CHARDONNAY
STA. RITA HILLS
VINTAGE 2013

NAME	VINTAGE	BLEND	VINE DENSITY vines/acre	YIELDS tons/acre	HARVEST Dates	BARREL REGIME	OTHER WINEMAKING	BOTTLING Date	RELEASE Date	VOLUME in 9L cases	Suggested Retail
Mt. Carmel Vineyard CHARDONNAY	2013	100% Wente/ Mt. Carmel	906	1.3	9/7-9/25	40% new French oak 30% neutral 30% stainless barrels	Rooted vines Planted 1990	Sept-14	Oct-15	100	\$75

CONTACT:

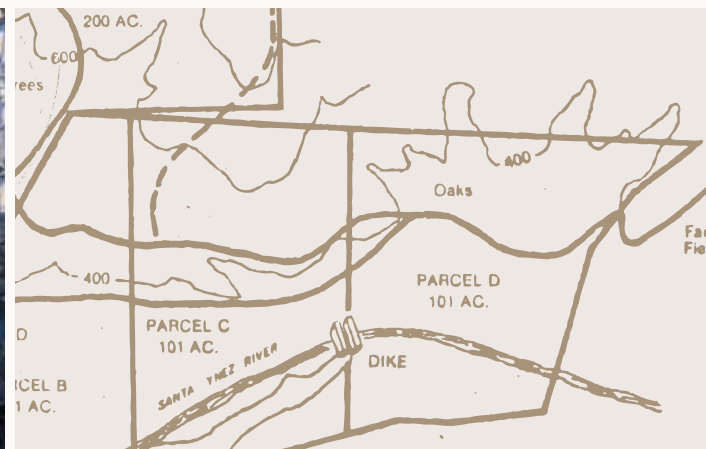
Ronald J. Piazza and Michael Palmer, Proprietors
Matt Dees, Proprietor/Winemaker

MAIL ROAD WINES. BUELLTON, CALIFORNIA
PH: 805.451.4440

MAILROADWINES.COM



MAIL ROAD MT. CARMEL STA. RITA HILLS



“It takes an optimist to plant a grape vine...”

A hill.

Built of sandstone, limestone, shale, silt and clay, and covered in tall grass, it rose sharply from the Santa Ynez River, faced due south, open and exposed to relentless sun and buffeted by nearly constant ocean gusts, the Pacific just a short few miles to the west.

Ten years hence, Mt. Carmel would come to mark the epicenter of the Sta. Rita Hills AVA.

Ron and Nancy Piazza planted a grape vine.